

Mitchell Industrial Tire Company, Inc.



RESILIENT

WEST LAKE®

SR61



Anti-Arc sidewall design, low rolling resistance tread compound, low heating central compound and unique base compound all enables great endurance. More powerful performance and stability. Deeper and optimized volume of tread part makes efficient management of the vehicle giving longer service life. 3-stage construction.

PERFORMANCE

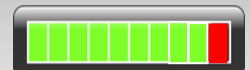
COMFORT



TIRE LIFE



ENERGY SAVINGS



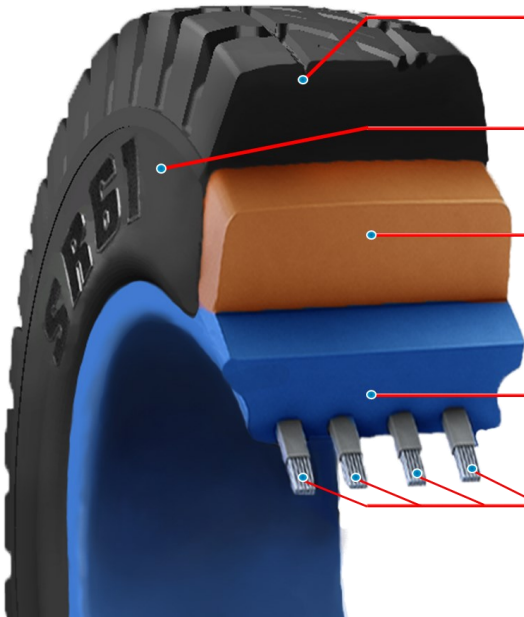
www.mitco.com



Compared to industry standards

WEST LAKE® SR61

SPECIFICALLY DESIGNED RUBBER COMPONENTS



1. Tread Compound

Synthetic blend low rolling resistance compound enables exceptional tire endurance

2. Sidewall Compound

Delivers cut and wear resistance. Generates less heat in operation giving longer life expectancy

3. Center Compound

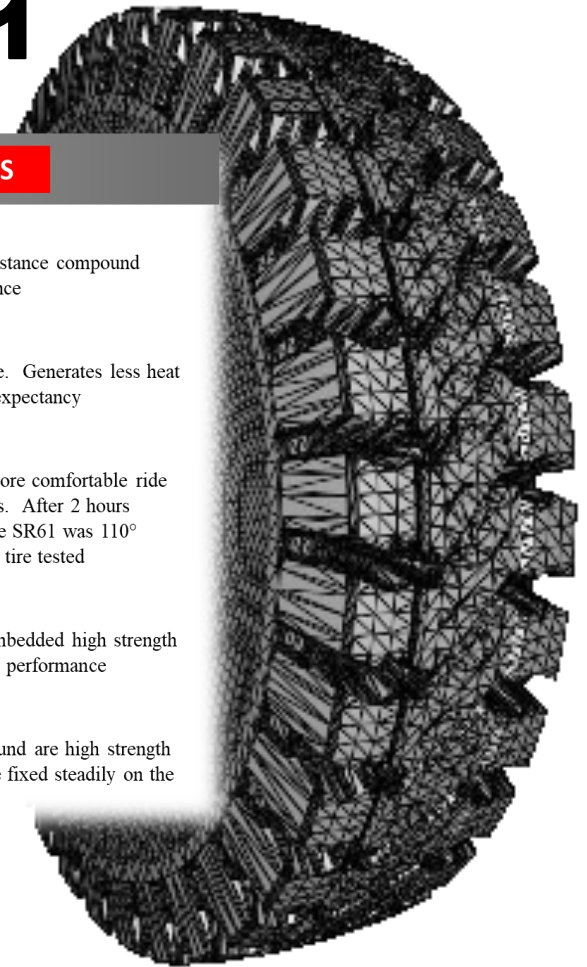
Soft cushion compound for a more comfortable ride and heat build-up characteristics. After 2 hours runtime at full load capacity, the SR61 was 110° cooler than the leading resilient tire tested

4. Base Compound

Unique base compound with embedded high strength steel bead wires for exceptional performance

5. Stranded Bead Wires

Embedded into the base compound are high strength steel bead wires enables the tire fixed steadily on the wheels without slippages



SMOOTH DRIVING & COOLER RUNNING

- Multi tread design enables better traction and stability. 3-stage compound delivering a smooth ride for comfort. After 2 hours runtime at full load, the SR61 was 110°F cooler than the leading Solid Shaped Pneumatic tested.



IMPROVED TRACTION & TREAD

- Directional tread design reduces lateral slip, enables stability. The SR61 tread compound is 26% stronger in a tear test than the GS Solid Shaped Pneumatic. Tear test results correlate with abrasion, cut and chip resistance.

PREMIUM SIDEWALL TREAD COMPOUND

- Delivers cut and wear resistance. Generates less heat in operation. This gives a longer life expectancy and low rolling resistance. The SR61 tread compound experienced 31% less wear in a wear test over a leading competitor tire.



EAST COAST

(800) 251-7226

(423) 697-7143 (FAX)

WEST COAST

(800) 648-2699

WWW.MITCO.COM

S I N C E 1 9 5 3

TIRE SIZE	RIM SIZE	ACTUAL TIRE DIMENSIONS		TREAD WIDTH	TREAD DEPTH	AVG. WEARABLE HEIGHT	LOAD CAPACITY COUNTERBALANCED LIFT TRUCKS	
		OVERALL DIAMETER	OVERALL WIDTH				AT 6 MPH	AT 10 MPH
	(in)	(in)	(in)	(in)	(in)	(lbs)	(lbs)	
5.00-8*	8x3	17.9	4.8	4.3	28/32	1.5	2761	2519
18x7-8 (180/70-8)*	8x4.33	17.9	6.0	5.6	23/32	1.5	5346	4873
6.00-9*	9x4	20.7	5.6	5.1	32/32	1.8	4345	3971
6.50-10*	10x5	22.6	6.1	6.1	33/32	2.0	5973	5467
7.00-12*	12x5	25.7	6.7	6.4	35/32	2.1	6831	6237
8.25x15*	15x6.5	32.2	7.9	7.4	40/32	2.6	11187	10208
8.15-15 (28X9-15)*	15x7	27.3	8.3	7.9	32/32	2.0	8932	8162
300-15 (315/70-15)*	15x8	32.0	9.5	9.0	43/32	2.6	15169	13860
14.00x24	24x10	53.0	13.5	12.7	57/32	4.5	26763	24431
14.00x25	25x11.25	52.5	15.0	14.2	57/32	4.2	29062	26532

* Available in EF Click Type



WEST LAKE[®]

SR61



EAST COAST

(800) 251-7226

(423) 697-7143 (FAX)

WEST COAST

(800) 648-2699

WWW.MITCO.COM

S I N C E 1 9 5 3

WARRANTIES

All products sold by MITCO are guaranteed to be free from defects in workmanship and materials. Any product found by us to have such a defect will be replaced or a reasonable adjustment or allowance will be made against the purchase of a new product, within our discretion. All other costs involved, including, but not limited to, labor, freight, service, and taxes are to be borne by the buyer. The buyer agrees that replacement or adjustment, as aforesaid, shall be the exclusive remedy and that MITCO shall not in any event be held liable for any special, indirect, or consequential damages. MITCO makes no other warranty, express or implied and specifically excludes any and all warranties of MERCHANTABILITY and FITNESS for a particular purpose.

MITCHELL INDUSTRIAL TIRE CO., INC.

Corporate Offices and Main Production Facilities

East Coast Sales and Distribution Center

Toll Free Sales: (800) 251-7226

Sales: (423) 698-4283/Fax: (423)697-7143

West Coast Sales and Distribution Center

12423 East Florence Avenue, Suite C

Santa Fe Springs, California 90670

Toll Free Sales: (800) 648-2699

Sales: (562) 941-1263/Fax: (562) 941-3766



DISTRIBUTED IN THE U.S.A.



EAST COAST

(800) 251-7226

(423) 697-7143 (FAX)

WEST COAST

(800) 648-2699

WWW.MITCO.COM

S I N C E 1 9 5 3